

EXTERNAL



2024년 10월

건설분야 로봇 응용사례

SANG-HUN WOO(sang-hun.woo@kr.abb.com)

ABB Robotics



Orientation

ABB

우 상 훈

과장

Concept Engineering Team

Consumer Segments and Service Robotics

Robotics and Discrete Automation

(주) ABB 코리아

충청남도 천안시 서북구 3공단 4로 49, 31093

Tel: +82 41 529 9999

Mobile: +82 10 6396 8112

Email: sang-hun.woo@kr.abb.com

Call center: 1588 9907

new.abb.com

Project Engineer

Trainer

Well positioned across global markets

Employees

~105,000

Countries

>100

Revenues

~\$29 bn

Europe

~\$10.3 bn

Americas

~\$9.6 bn

AMEA

~\$9.6 bn

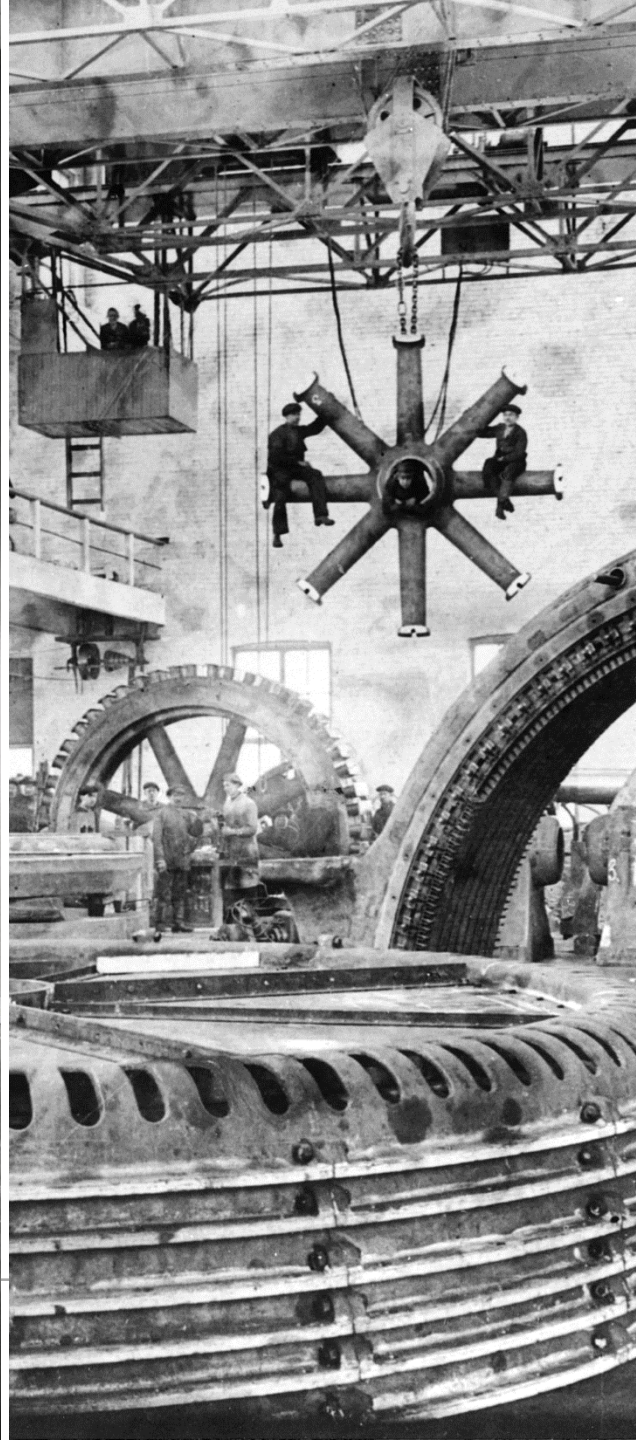
ABB는 전력 및 자동화 분야의 기술 리더로서 보다 지속 가능하고 자원 효율적인 미래를 실현합니다.

회사의 솔루션은 엔지니어링 노하우와 소프트웨어를 연결하여 사물의 제조, 이동, 전력 공급 및 운영 방식을 최적화합니다.

2022 figures

ABB

ABB has been
pushing the
boundaries
of technology for
+130 years



Top 3 engineering companies in the world



SIEMENS

International Federation of Robotics(IFR)

The Speakers



Marina Bill
IFR President

Global Head Marketing
& Sales, ABB Robotics



Dr. Christopher Müller
Director Statistical Dpt.

International Federation
of Robotics



Dr. Werner Kraus
Chair IFR Service Robot
Group

Head of Dpt. Robot &
Assistive Systems,
Fraunhofer IPA



Dr. Susanne Bieller
General Secretary

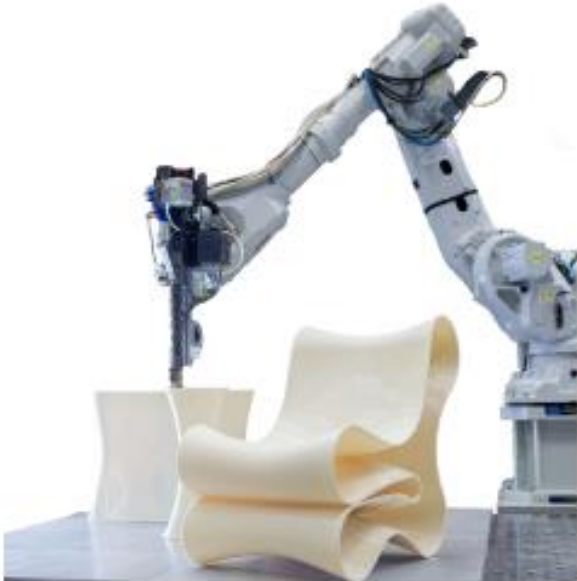
International Federation
of Robotics

3DP PowerPac

3DP PowerPac

Materials

Plastics & Composites



Concrete & Ceramics



Metals (Arc and Laser welding)



Food & Other Materials



3DP PowerPac

Market segments

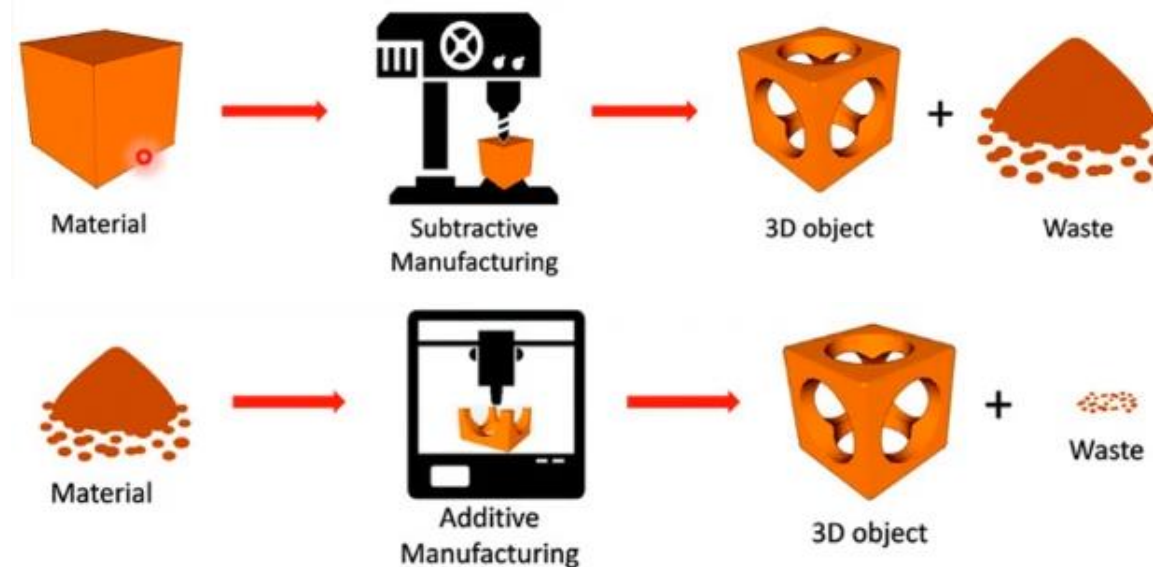
Automotive & Aerospace

Automotive (granulates, clay)

- Prototype parts
- Prototype car bodies
- Fixtures
- Interior details for short series production (e.g. premium cars and trucks)

Aerospace (Arc and Laser welding)

- Additive manufacturing instead of traditional subtracting manufacturing.



3DP PowerPac

Market segments

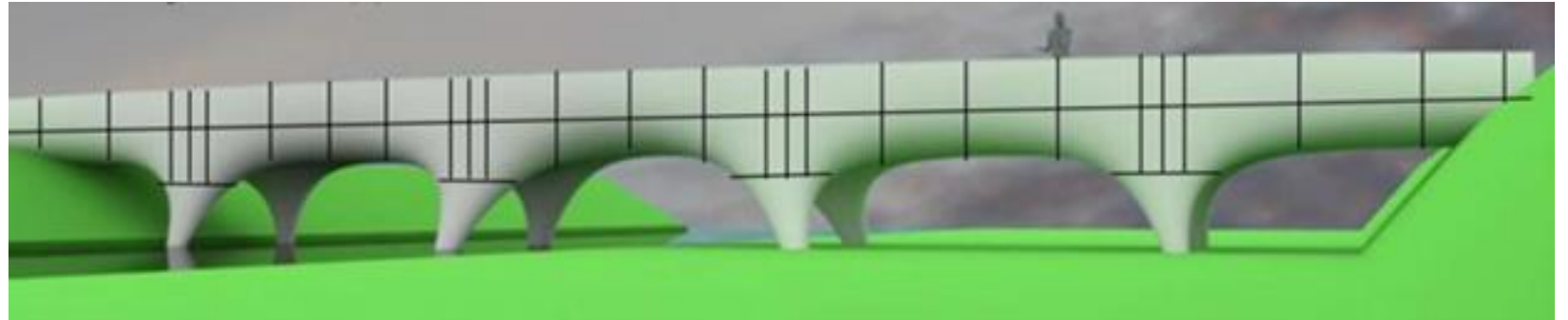
Construction & General Industry

Construction industries (concrete)

- Building elements
- Houses
- Bridges
- outdoor furniture etc.
- Concrete + Steel Wire Reinforced

General industries (granulates, clay, WAAM)

- Prototypes
- One off production
- Small batch production



3DP PowerPac

Market segments

Other

Outdoor industry (bio composite granulates)

- Boat hulls
- Molds for boat hulls
- Interior details for boats (e.g. yachts)
- Canoes/Kayaks
- Wakeboards etc.

Food

- Prototypes
- One off production
- Short series production
- Chocolate decorations

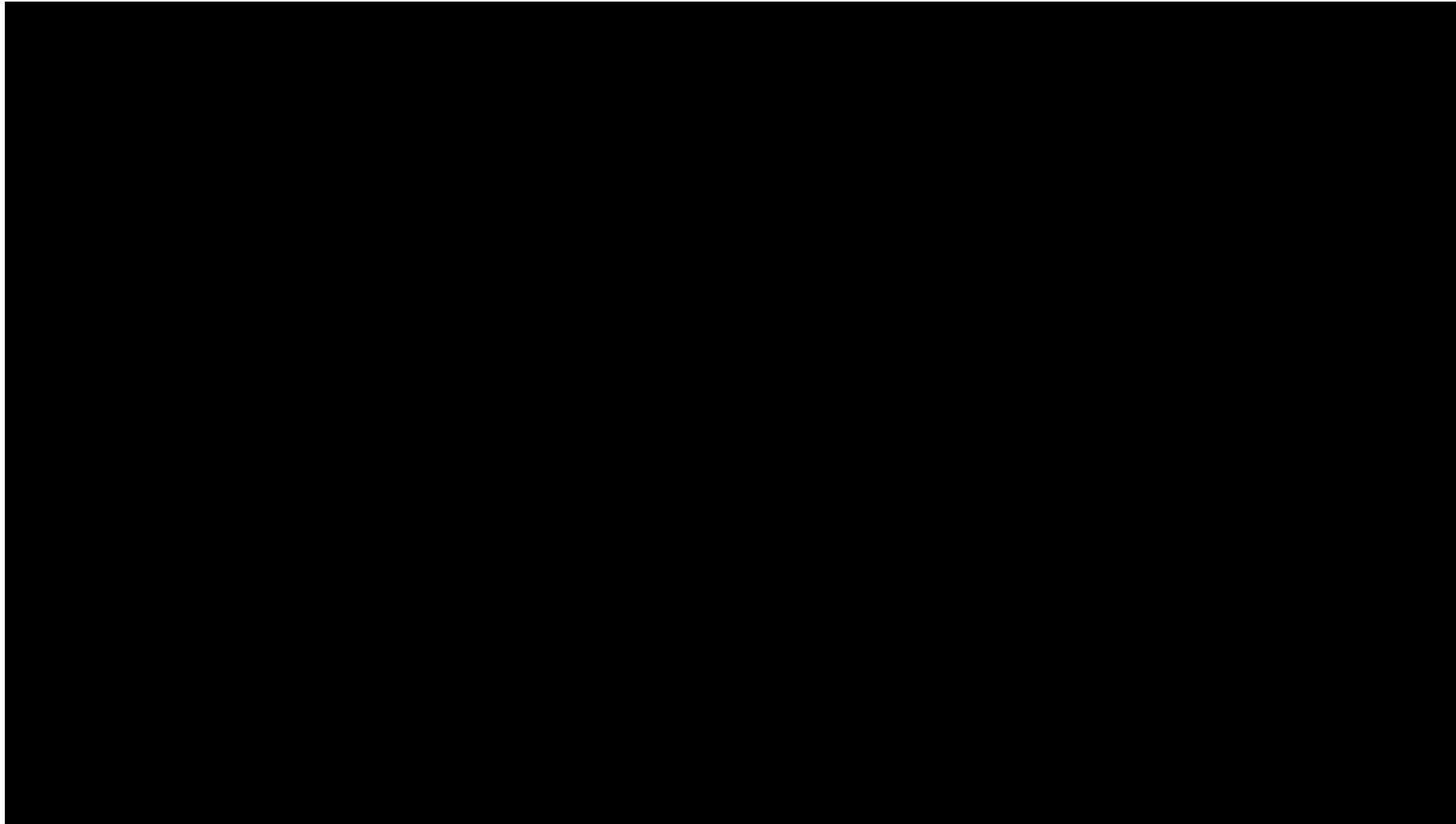


ABB 3DP Powerpac



— 산업용 로봇 건축 응용사례

ABB 건축응용분야 대학연구(2018)



Victoria University of Wellington



Motto *Sapientia magis auro desideranda*
(Wisdom is more to be desired than gold)

Gründung 1897

Trägerschaft staatlich

Ort [Wellington, Neuseeland](#)

ABB 건축응용분야 대학연구(2022)



Universität Zürich



Universität
Zürich^{UZH}

Gründung	1833 (Rechtsvorgänger: 1525)
Trägerschaft	Kanton Zürich
Ort	Zürich
Land	 Schweiz

ABB 건축응용분야 대학연구(2024)

Universität Kassel	
U N I K A S S E L V E R S I T Ä T	
Gründung	1971
Trägerschaft	staatlich
Ort	 Kassel
Bundesland	 Hessen
Land	 Deutschland

ABB 건축응용분야 및 R&D

미국



ABB